

# netmail archive

## Policy-Based Email Archiving and eDiscovery

### The Business Case for Email Retention

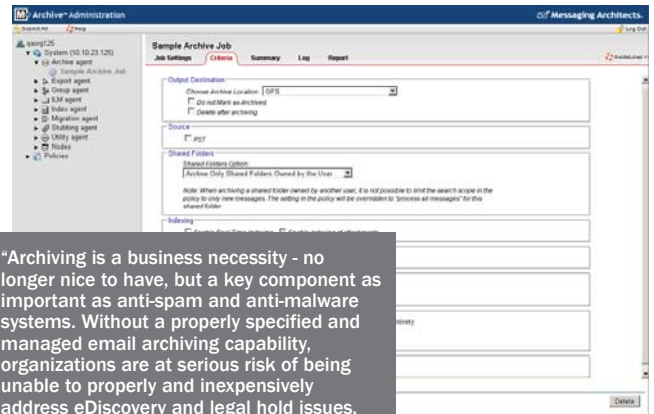
With 75% of an organization's intellectual property stored, circulated, and managed via email, there is increasing pressure to protect and manage electronic data to meet the needs of regulatory compliance and eDiscovery, while also ensuring high availability. Combined with the complexity of regulatory frameworks and costs of legal discovery, organizations need to apply modern risk management techniques to their enterprise email systems in order to avoid potentially disastrous consequences. Netmail Archive helps organizations of all sizes to resolve the complex issues of retaining, retrieving, and reporting on electronic communications by providing an intelligent archiving platform that stores, manages, and enables the discovery of electronic data from any corporate collaboration system.

### Policy-Based Email Archiving

Netmail Archive provides a policy driven and centralized administration with full support for eDirectory and Active Directory. With Netmail Archive, organizations can archive all email messages, attachments, calendar items, tasks, and notes from Microsoft Exchange or Novell GroupWise. The flexible and intuitive Administrative Console facilitates the granular application of unique policies to selected users or groups of users in your email system. Netmail Archive gives you flexible control over the organization's email policies; you can always amend existing policies or create new ones as your business needs change.

### Intuitive eDiscovery

With Netmail Archive, administrators can respond to eDiscovery requests quickly and cost-effectively and significantly reduce risk and liability. Providing guided navigation for advanced search, legal hold and analysis of archived items, Netmail Search, our advanced eDiscovery tool that integrates with Netmail Archive, allows you to search millions of email messages, calendar items, notes and tasks in seconds. With Netmail Archive, organizations are able to ensure a single point of discovery thereby significantly reducing their eDiscovery costs and increasing their efficiency and timeliness in responding to requests through a flexible and fully auditable export process.



"Archiving is a business necessity - no longer nice to have, but a key component as important as anti-spam and anti-malware systems. Without a properly specified and managed email archiving capability, organizations are at serious risk of being unable to properly and inexpensively address eDiscovery and legal hold issues, regulatory compliance requirements, storage management, and data mining."

Source: Michael Osterman, Osterman Research, 2009

### Regulatory Compliance

Netmail Archive comprehensively addresses the needs for regulatory compliance of regulated industries and can be used to deploy compliance modules that apply to specific vertical markets. Examples of such modules include Information Lifecycle Management, SEC compliance, and WORM-based storage. Netmail Archive generates a fully-indexed, application, and file format-independent archive of all electronic data for immediate search and retrieval. It can be easily configured to meet your organization's requirements, ensuring ongoing adaptability to the evolving landscape of laws and regulations.

### Enterprise-Class Architecture

Based upon our Netmail Integrated Email Management Platform, Netmail Archive supports true clustering and load balancing to enable multiple servers to work together. It is configured to automatically detect additional nodes and cluster together for maximum performance and uptime, leaves zero footprint on your mail servers, and requires no additional hardware or software. By pro-actively monitoring the system nodes, Netmail Archive identifies and detects nodes that may be overloaded and impacting performance before automatically redistributing the workload to better utilize system resources.

## Interoperability

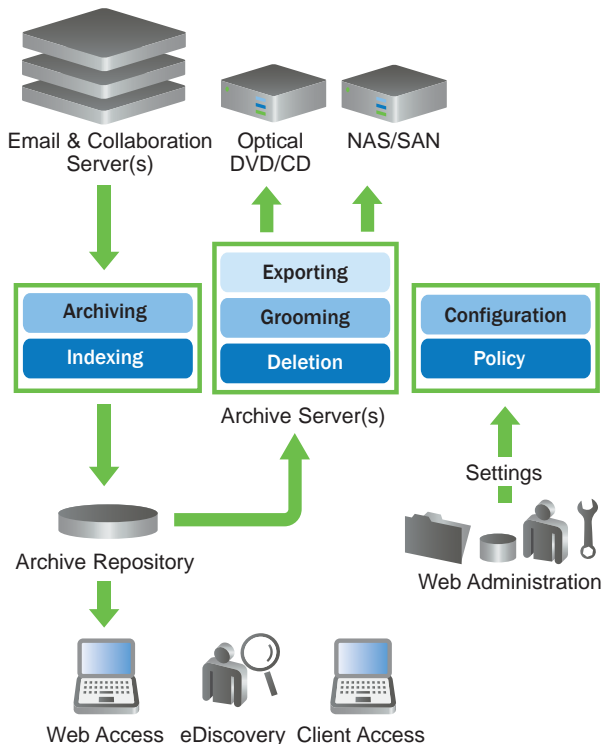
Netmail Archive is an easy-to-deploy, stable solution that can be seamlessly integrated into your existing email environment without compromising the speed or efficiency of your messaging system. Netmail Archive supports heterogeneous environments to facilitate full-scale system migrations and can be deployed in mixed messaging environments. This interoperability ensures that organizations can seamlessly archive data from Novell GroupWise to Microsoft Exchange 2010.

## Advanced Storage Management

Netmail Archive is a storage-agnostic solution that can be deployed with a number of storage solutions including Netmail Store to dramatically reduce the cost, complexity, and time traditionally required for provisioning storage. Netmail Store provides a greener IT storage environment resulting in a substantially smaller footprint not only in capital expenditures and management labor, but also in energy consumption, cooling, data center space, and associated costs. Netmail Archive also offers API-level integration with numerous third-party storage vendors like Hitachi Content Archive Platform, NetApp Storage Systems, Nexsan Assureon, and EMC Centera.

### Supported Collaboration Systems

- Microsoft Exchange • Novell GroupWise



## Product Highlights

**Optimized Single Instance Storage** – In environments where messages with attachments are forwarded to many users, SIS enables the storage of a single copy of any archived message attachment allowing administrators to reduce the size of the archive and better control the flow and management of email attachments.

**Seamless End-User Experience** – Netmail Archive is designed to offer a seamless user experience by providing a web-based search and administration interface, email client integration, and Outlook Web Access, Outlook Web App, or GroupWise WebAccess integration.

**Stubbing Architecture** – Netmail Archive allows administrators to manage mailbox sizes by removing email messages, attachments, calendar items, tasks, and notes from Exchange or GroupWise 8 and replacing them with a much smaller stub that points to the copy of the item that is stored in archive. With stubbing, end users can perform federated searches across online active and archived email seamlessly within Outlook 2007/2010 and GroupWise 8 clients.

**Enhanced Migration Tools** – Netmail Archive includes enhanced migration tools for interoperability and migration between email platforms. The Migration Agent allows organizations who are migrating from Novell GroupWise to Microsoft Exchange 2010 to migrate their data into the new email system and perform mailbox recovery from Netmail Archive to Exchange.

**PST Management** – Integrated with Netmail Archive, netmail PST Radar is a discovery tool that detects and locates PST files across the organization's network, allowing you to archive and manage all PST data in a centralized email archive.

**100% Email Retention** – Netmail Archive's GroupWise retention timestamp feature ensures 100% retention by applying a time stamp to items that have been archived. To attain 100% retention in Exchange 2007/2010, you can archive the Exchange Journal account which will retain a copy of all incoming and outgoing data.

**Data Accessibility & Portability** – Netmail Archive offers both web-based and direct network access to the archive repository. Both methods support advanced search and secure export of records in XML and PST file formats.

To learn more visit: [www.messagingarchitects.com/archive](http://www.messagingarchitects.com/archive)